



BYGONE FASHIONS

New exhibit for Visitor Centre

> NEWS PAGE 5



TOP CLASS PICTURES

MVG photographer receives accolades

> ARTS PAGE 10



LEAPING INTO A NEW SEASON

Little Athletics ready to sign up newbies

> SPORT PAGE 16

Meander Valley Gazette

FREE! Every Month

September 2016

Meander Valley Gazette Your independent, local paper



Quackers About Springtime

Things to do in spring: Page 12

Photo by: Mike Moores

Meander house of hope

By Joanne Eisemann

WITH LEASE negotiations on the old Meander School almost complete, Teen Challenge Tasmania (TC) is busy finalising plans to convert the buildings into 'Home of Hope', a women and children's rehabilitation centre.

"We have no desire to change the way it looks, the school has an incredible heritage... we want to pay homage to that," says TC CEO Tanya Cavanagh.

Once Council has approved plans, a mixture of local volunteers, contractors and teams of volunteers from WA will carry out the work.

"This will be the first women and children program of its kind in Australia" explains Tanya and has come about through repeated requests to her and her husband Pete while working with school age Tasmanians on a drug education program called 'Not Even Once'.

"We had woman after woman coming to us with kids, men we can help get into centres here or on the mainland and single women we have some success with, but women with kids forget it," explains Tanya.

Once complete, the centre will be home to up to twelve women, (some with children) for up to 12 months while they complete an intensive program to help build a positive framework for their lives.

To be part of the program women must complete a six-week induction outside the centre to make sure they are clear about what the program involves and that they are committed to change.

"For the ladies to come in they have to want to be here...we are interested in people who are dead serious on getting themselves right," comments Tanya.

"Before they come into the centre we need

to make sure they have been detoxed" explains Tanya adding, "when they first arrive they are tested and throughout the program they are tested."

The program is holistic in nature with an emphasis on establishing life skills and emotional resilience.

"What we do is because of our faith... within the program there is a lot of Christian content but as far as expectations on individuals to follow our faith, that is up to them. I cant force anyone to become a Christian," says Tanya.

All staff will have

completed a 12 month Teen Challenge training program as well as a minimum of Certificate 4 in Community Services with senior staff having a degree in a related discipline.

Tanya says that because the program is highly structured there is little risk of outsiders being able to access the program. "It's not a come and go as you please type of place ... we will have video surveillance, alarms on doors and have well established risk management policies."

Continued on Page 12

In My Opinion...

By Joanne Eisemann
Managing Editor

IT'S OFFICIAL, the pictures taken for *Meander Valley Gazette* by Mike Moores are a class act.

We entered some of Mike's pictures in the 2016 Victorian Rural Press Awards.

In each of the three categories entered he was 'highly commended' (aka second) including the 'Photographer of the Year' category (see page 10 for the images).

It is no mean feat for a paper like ours to take on the likes of the *Weekly Times* or the *Geelong Advertiser* and be placed so highly.

Having previously won 8 awards for his pictures Mike is no stranger to the limelight, but I wonder how many of us acknowledge what a wonderful service Mike is giving to Meander Valley?

In years to come these

pictures will become much of the historic record of the area and serve generations of people trying to understand their past.

Images have the power to change the world, just think about the images of the drowned Syrian toddler, Alan Kurdi, washed up on a Turkish beach last year.

We all knew of the atrocities happening to Syrian people but those images caused a huge shift in the care factor. Even the 'We don't want refugees here' Aussies decided to open the doors a bit.

Or consider the recent images of the boy in the restraint chair at the Detention Centre in Darwin. It prompted a royal commission even though the problem had been written about for years.

I don't think we should ever underestimate the power of images.

Letters In...

I LIVE in Meander Valley Council municipality at the former Rutherglen Residential Club. Most of the over 65 places here are small, but each one pays rates.

In our latest rates notice council have charged everyone in the municipality, regardless of property size a waste charge of \$46.00.

At Rutherglen Residential Club we also pay corporate body fees, which include a cost to our private waste collector; Veolia, as well as our on-site caretaker who collects our rubbish twice weekly.

The council do nothing here with regard to our waste. They do not supply waste or recycling bins. There is no recycling service. There is no kerbside waste pick up.

That's nearly \$3000.00 just from here towards the tip and we don't even use their services. Our waste collector takes the waste into the Launceston tip.

So needless to say some of the ratepaying residents here are not happy about this charge. I have tried to seek an explanation from the council, but so far no explanation is satisfactory.

Deborah Fisher



8 pre-primary children from Launceston Day Care planted trees on Westbury Town Common for 2016 Planet Ark National Tree Day.

I AM EXTREMELY disappointed with the bias and one sided reporting on your August editions front page.

Your reporter has made statements that when fact checked are simply not true.

A balanced story is what any reporter should put forward.

A better story may be the threat of legal action (that was tabled 2 hours before the July Council meeting) against 2 Councillors if they voted on the Meander School / Teen Challenge motion.

That is Intimidation and Bullying and is so wrong on so many levels and shows how low that some will go.

Perhaps your reporter will do a better job next issue.

Wayne Johnston

I RETIRED to Meander 3 years ago, and offer my experience of the events leading to Teen Challenge being chosen to lease Meander Primary school.

The Meander Valley Council's first real attempt to contact the whole community about the proposed use of the school was in March 2016.

This was a letter about a public meeting to hear from the three proponents being considered.

The second occasion was in May 2016, inviting participation in a survey best described as minimalist, the choices had narrowed to two, with no provision to suggest alternatives.

Yet Council had known of this issue for over a year.

So yes, the whole community was informed – but clearly after decisions had been made.

But the whole community was never properly consulted about its views on what the school could/should be used for. The Council has disregarded a well-known axiom; the more contentious an issue, the greater the need for extensive community consultation.

Karen Hillman, Meander

I HAVE been a local resident for 27 years and I am strongly in favor of Meander School staying in public hands.

I hear now that a local faction had been talking to Teen Challenge for two years, even while the school was still open. They had a year and a half to prepare their proposal. All other proponents had only 5 weeks to prepare.

We live in a place that we all love and we got to be creative and daring when we create a vision for the future together and expand reasons to live here. Let us use the school again as a community asset, let it contribute to local people feeling connected and not needing stress, addiction and violence in their lives.

Please give the community a chance and take any steps to bring the school back to the community.

Martin Bratzel

I FOUND the August article Meander School very biased and not based on facts.

Are you aware that the majority of the community support the Home of Hope and are 100% behind it?

Are you aware the facility in New South Wales that the article linked to Teen Challenge, saying it was a similar facility, couldn't be further from it?

I have noticed the very biased way the *Meander Valley Gazette* has slanted its articles about the Meander School, both this one and previously.

I seriously question the credibility of the articles you have allowed to be published without basic fact checking.

Do you even know what Home of Hope stands for? If not I would encourage you to find out for yourself and check your facts for accuracy. I also believe you owe Teen Challenge a published apology for publishing lies and misleading information, and for the biased way you have run your newspaper. I can only hope!

Marnie Struthers, Deloraine

EST. 2013

Meander Valley Gazette

This newspaper is published by Meander Valley Online Inc 21 West Parade, Deloraine 7304 ABN: 89090614412. 9,000 copies are printed each month on paper made in Tasmania. Delivered to all homes in Meander Valley.

Editorial enquiries:

Contributions welcomed! Email: editor@meandervalleygazette.com Ph: 6286 8212 (leave a message, it will send an email).

Editorial closing date for October 2016 issue is 23rd September.

Advertising enquiries:

Email: advertising@meandervalleygazette.com Ph: 6286 8216 (leave a message, it will send an email).

Advertising closing date for October 2016 issue is: 19th September.

Photo sales

Many of the photos in this publication are available for sale in varying sizes. For further information please call 6286 8216 or email photos@meandervalleygazette.com

Please Note

While every care is taken the producers of *Meander Valley Gazette* cannot be held liable for any publication errors in written material or advertisements. The opinions expressed, whether by paid advertisement or editorial content do not necessarily reflect the views of this newspaper. Some material may be abbreviated due to space availability.

Please Deliver *Meander Valley Gazette*

Home Delivery

If you live in Meander Valley Municipality and are not receiving *Meander Valley Gazette* at your home each month, it may be because you have a 'no junk mail' notice on your letterbox. Drop in or contact our office (Ph: 6362 3537 or email general@meandervalleygazette.com) to get your 'Please deliver *Meander Valley Gazette*' weatherproof sticker at no charge. Leave your address with us and we will let Australia Post know of the change.

cradle coast innovation
Switching on innovation & enterprise

FREE BUSINESS ASSISTANCE

- For those with a business or business idea
- Visiting you at your home or office
- Confidential, professional service

Contact Daryl Connelly M.B.A. FRM on 0488 333 893 or daryl@cradlecoastinnovation.com.au
www.cradlecoastinnovation.com.au
Funded through the Tasmanian Government's Enterprise Centres Tasmania Program

AUTO ELECTRICAL
Launceston

Fully qualified Auto Electrician for technical support

- ✓ Starter motor and alternator testing, replacement and repairs
- ✓ Air conditioning servicing and system checks
- ✓ Fault finding and auto electrical diagnosis
- ✓ Dual battery systems
- ✓ Reversing cameras
- ✓ Trailer braking systems
- ✓ All other auto electrical repairs

ARC AU 1810
RACT TACC Member

6 Shamrock Street, South Launceston
Phone 6334 8722
www.radiatorsplus.com.au email: radiatorsplus@bigpond.com



Chudleigh's sacred grounds

John Hawkins of Chudleigh in the village's old Church of England graveyard under the ancient banksia, which was also a sacred Indigenous site. Photo by: Mike Moores

By Chere Kenyon

CHUDLEIGH IS only a small village in the Meander Valley in comparison with others, but it has a rich history and the distinction of having not one or two, but three graveyards.

The first churchyard, located on a hill south of Chudleigh, was the original Church of Scotland grounds.

It is privately owned by John Hawkins, owner of 'Bentley' homestead.

It had been completely overgrown and covered in gorse, but John has now cleared it and his wife has planted an arboretum of native Tasmanian trees below

the burial grounds.

They have now re-opened the graveyard to Chudleigh residents.

John continues to maintain the graveyard at his own expense and it's quite a task for an individual to keep a cemetery looking beautiful.

The earliest grave appears to be a man called Wiggin (Wiggin Hill is located above Wesley Dale) who was born before 1788 and died around 1860.

The 'bottom' graveyard (heading towards Mole Creek) has always been a sacred place.

John said, "The churchyard at the bottom was a sacred place for Aboriginals and it

covered the crossing point of what later became the Lobster Rivulet and is on slightly elevated ground."

This is where the Aboriginals had their camp, under this magnificent banksia which is the largest and most important banksia probably anywhere in this world

"From there the Aboriginals could survey their fire farm landscape up the valley." It was called the Aboriginal Native Hut Corner camping grounds and the Pallitorre controlled access to

the Ochre mines of Alum Cliffs from this location.

The Europeans later introduced sheep, and as they were an easier source of food for Aboriginals, the situation became ripe for trouble and eventually the Pallitorre were massacred.

John Hawkins went on to add, "We took over their sacred place, as and when they were basically removed from our environment, and turned it into our sacred place, the Church of England graveyard.

So, in a way, it is a particularly historic place for two communities; the Aboriginal community and the white settlement community of 1826."

"This is where the Aboriginals had their camp, under this magnificent banksia which is the largest and most important banksia probably anywhere in this world. It is possibly a thousand years old." Unfortunately you can't accurately date a banksia tree because it doesn't have rings.

The third graveyard consists of Catholic graves which are located beyond the Church of England graveyard boundary.

You can read more on the area by Googling 'The history of Chudleigh Valley John Hawkins' and downloading the Blue Gum Newsletter.

PJS Financial
Public Accountants and Registered Tax Agents

Phone: (03) 6362 2346 or Fax (03) 6362 3248
Email: info@pjsfinancial.com.au

Now at two locations!

Deloraine Office **Launceston Office**
21 West Barrack Street Cnr of York & Bathurst St



Sam Horsman
Business Principal





Peter Sherriff
Business Principal

ADVERTISEMENT

JOIN TASMANIAN LABOR
www.taslabor.com



Rebecca White MP
State Member for Lyons

6212 2225
rebecca.white@parliament.tas.gov.au

Authorised by REBECCA WHITE, Parliament House, Hobart

Labor

J.G Pest Control
The Home Pest Control Specialists



Removal of ALL Home Pests!

Including Sheds, Garages & all Outdoor areas.
Spiders, Earwigs, Centipedes, Scorpions & other Creepy Crawlies.
Cleaning of Cobwebs, Rat & Mouse Control & Treatment of Wasp Nests.

ALL Enquiries welcome, Please phone or email Guv on
Phone : 0418 697 061 or 6362 2532
Email: guv-kate@bigpond.net.au

by David Claridge

THERE IS an alternative learning space in Westbury for young people to engage in something constructive and give back to the community.

The Building Together project, is a chance for local young people to use materials and construct something that others can use.

Overseer of the project, Nate Austen, said that it's an opportunity for them to work together with adult mentors, and construct projects that can be either sold or donated to the community.

We're focussed on the process of constructing it together and completing the job.

"For me, it's really around developing skills, building relationships, that sense of achievement, and being able to stand back after a little bit of effort and realise what they have done," said Naten.

Working in four-hour sessions once a fortnight, the teams work in 'blocks' to construct something that can be sold to the community to purchase more timber materials.

The team is currently hard at work making outdoor picnic tables.

"We try to mitigate risks, so the young people can only use



Building Together Facilitator, Geoff Berry, of Deloraine with Tamzin Thomas of Westbury. Photo by: David Claridge

Mentoring young builders

some of the tools. We try to prepare all of the materials off site so the amount of cutting, the more dangerous work is off-site, pre-prepared.

"We're focussed on the process of constructing it together and completing the job.

Many of projects sold to date include kid's picnic tables

to the Toddle Inn, and an adult picnic table to the Meander store.

The team hope to have items to bring to the Deloraine showground market in December, before Christmas.

For purchasing or project-inquiries contact Nate Austen on 6701 2150.

MEANDER VALLEY - GET INVOLVED

Drum up some friendship

THERE WILL be a Friendship Festival in Deloraine on Friday 16th September at the Rotary Pavilion in Alverston drive.

It will focus on connecting young people through the use of rhythm, with three sections: 9:30am - 12.00, a face to face drumming work-

shop; 12:30 - 2.00pm, a service provider workshop including people working in the community and 2:30pm - 5.00pm family and community, an informal space to look, listen and share ideas for providing for young people in the area. Enquiries to Nate Austen on 0427 543 365.

Free entry to national parks

CELEBRATE THE 100 years of national parks in Tasmania with free entry.

The free entry offer for the State's 19 national parks will extend over the the school holiday period from 24th September to 9th October.

The Meander Valley region

is surrounded by a number of national parks, including Narawntapu National Park, Mole Creek Karst National Park and Ben Lomond National Park.

For more information, go to the Parks Centenary website at www.parks.tas.gov.au/centenary

Fish feast at Quercus Park

THE LIONS Club of Westbury will be holding their annual Fish Feast at Quercus Park on Saturday October 15th at 7.30pm.

Fish Feast is a night of food, fun and fabulous local enter-

tainment.

Proceeds go to the Royal Flying Doctor Service.

Contact Lyn Dent on 0439 639 731 to book your table. RSVP by Friday 7th October.

IN THE GARDEN WITH NELL CARR

TOMATO SEEDS will germinate in a week if sown in trays of moist seed raising mix and placed in an even temperature of 25C, e.g. the top of a hot water cylinder. Remove to a sunny window as soon as the shoots appear.

White Turnips

Seeds may be sown sparsely in well manured soil. Thin out

when they reach golf ball size. These are delicious cooked whole and served with butter. This will leave space for the remainder to grow to full size.

Camellias

Wet winters seem to suit Camellias as they are blooming profusely.

Sadly, however, heavy rain adversely affects the pastel coloured varieties such as the lovely delicate pink semi-double "Bernice Boddy", leaving disfiguring brown blemishes on the petals.

Those of a more robust colouring such as 'The Czar' (pictured) have not been so affected.



Delightful deserts campaign

A SMALL committee of friends and former work colleagues rallied together on the 7th of August in order to raise funds in support of Anita Griffith, who has Multiple Sclerosis.

Their aim was to help Anita finish paying for a compact motorized wheelchair. Funding was also contributed to the purchase of a rehabilitation exercise bike to help regain strength.

Unfortunately Anita is highly allergic to MS medication & painkillers.

'Desert Heaven' held at the Deloraine Bowls Club raised \$3,643.70.

The organisers would like to thank everyone who donated so generously in the

way of sweets & donations for the raffle!

If you would like to make a donation go to Anita's gofundme page: www.gofundme.com/2bayr8son Facebook.



Deloraine Deli



Evening dining
in a relaxed and
friendly atmosphere
Friday &
Saturday
Nights

Mention this ad for a complimentary drink with evening dining

Deloraine Deli

81 Emu Bay Road

p 6362 2127

e info@delorainedeli.com.au

w www.delorainedeli.com.au

Mon - Thurs 8.30am - 5pm

Fri & Sat 8.30am until late

Sun 10am - 4pm





Cholena Hume (15) of Deloraine, modelling the Possum coat.

Photo by: Mike Moores

Hello possum!

By Heather Summers

WHAT DO you have hiding in the back of your closet? Don't be too hasty when de-cluttering, you could be harbouring an item of significance to social history.

This is what John and Sharon Cunningham found when downsizing the family home. A black-brush possum skin coat with matching hat, which John had commissioned for his wife from skins he had trapped himself.

Unable to find a home for the coat among family members, it had a narrow escape from the charity bin. It was only through a chance encounter with a publication from the Mountain Hut Preservation Society, prompting a phone call from John, that the coat came to the attention of Roger Nutting and the Great Western Tiers Visitor Centre, where it is now on permanent display.

Initially wanting to make a possum skin bed spread for his then fiancé, now wife (they have been married for 45 years), John decided to concentrate his efforts on trapping the black-brush in order to make the coat, needing 28 pelts in all, including two for the hat. This was in addition to the grey skins trapped for export. Taking over an aban-

doned skin line on the East Coast, he had enough pelts after one season, typically six weeks over Winter. They were stamped at the police station in St. Marys, and sent to be tanned in Melbourne. The items were then sent to Hobart, to be made up by furrier Frank Zaplatel.

Unable to find a home for the coat among family members, it had a narrow escape from the charity bin.

With advice from the Queen Victoria Museum, the coat is now being displayed under LED in a custom made case, in order to ensure its longevity and safekeeping. Roger Nutting says of its presence in the visitor centre, "We are very pleased to have this item on permanent display. It is important to preserve this piece of social history."

Trapper's huts were once a common feature of the Tasmanian landscape, and the winter pelts in high demand in Europe, being of very good quality. As most of the skins, including possum, wallaby and kangaroo, were trapped for export, this beautiful coat is a great example of an item made for domestic use.

Festival for creative grownups

DELORAINE IS the place to be during seniors week. Aged Care Deloraine together with a host of partners and venues have put together a 'Meander Valley Festival of Creative Ageing'. A week long celebration of music, art, dance,

radio, singing, story telling, photographs, film, & creative movement. Events include; a Grenoch Gallery 'Ageing' exhibition, 'The Power of Music' at Deloraine Library, 'Living On' exhibition at

Deloraine House. 'Our kitchen rules' at Kanangra and, a 'Radio Club community recording at Elemental Arts Space. Find the program at meandervalleycommunitydirectory.com.au/ (scroll to the bottom)

Unshaven schnauzers

THERE'S A new bearded group meeting in Deloraine this September and it's not the human kind.

Bearded Buddies of Tasmania is a facebook group for Tasmanian schnauzer owners and enthusiasts to learn, share ideas and network.

They will be holding a meet in Deloraine on

18th September.

Anyone in the community with a schnauzer or a love of the breed is invited to join them for a walk at 12 noon at the Deloraine Train Park.

For more information contact beardedbuddies.tas@gmail.com or join the Bearded Buddies of Tasmania facebook page.

Join Esther Shohet at the 2016 Tasmanian Craft Fair

The 2016 TCF Feature Artist would like to invite the people of Deloraine and attendees at the Craft Fair to get involved and create a silk painting with her.

Esther will begin by stretching a piece of silk to a frame and doing an initial drawing in hot wax onto the silk before going to Deloraine. During the fair, Esther will have a table set up with the waxed silk and silk paints and plans to encourage the public to add their little mark to the painting by colouring a small section each so that the entire painting, except for the initial drawing, will be completed by the public.

Patrons do not need any artistic skill as it will be similar to painting by numbers and even if a person only paints a tiny flower, they will still feel like they have had a part in it. Esther will then take the painting home, remove the wax (done in a steaming process) and it will be ready for sale. The painting will then be donated to the Rotary Club of Deloraine to be sold off to raise money for the Deloraine community.

Additionally, Esther will have a range of work for sale at the Craft Fair, from originals, to prints, place-mats and much more.



4-7 November 2016
tascraftfair.com.au

Rotary
Club of Deloraine

TCF
Artists and Artisans



Relief society to the rescue

When Youth Futures Inc (a young mens shelter) put out an appeal for some warm blankets, a group of Latter Day Saint women from Deloraine answered the call. The material, polar fleece, was bought, cut out and stiched, then presented to Youth Futures Inc where they are already in service. Pictured: Suzanne Walters and Phyllis Moores both of Deloraine. Photo by: Mike Moores

Project approved, needs more workers

COLONY 47 is happy to announce Council approval for the Bush Tucker Trail (BTT) on the Northern bank of the Meander River in Deloraine. The inclement weather has meant delays for on-site works, and so BTT is now due to begin in September. A contractor has been engaged, volunteers are on board and plants ordered.

Elements of the walk will include handmade pavers decorated by local school children with their own designs featuring Aboriginal motifs, under the direction of Aunty Dawn Blazely and Greg Murray. A metal fire-pit made by local artist Matthew 'Moby' Dick will be a feature of the Yarning Circle, and 8 native

animal sculptures are to be created by John Parish. As the Bush Tucker Trail progresses there are many ways for community members to become involved. Register as a helper to prepare six small plant beds in a one-off working bee or join the ongoing maintenance team. For more information, contact Martin Hay on 0447 800 625.

Ashley centre alternative

By Hayley Manning

AFTER VIEWING disturbing images from inside Darwin's Don Dale Detention Centre, the Prime Minister, Malcolm Turnbull, has ordered a royal commission into its youth justice system.

But recent 'unacceptable' incidents closer to home at Ashley Youth Detention Centre, on the outskirts of Deloraine, have politicians insisting the royal commission extend its probe Australia wide.

The Tasmanian government's current \$5.3 million commitment to an early intervention program that provides alternatives to youth incarceration is reflected in the significant reduction of offenders completing custodial sentences at Ashley.

However, Butterfly House Drug Rehabilitation founder, Jennie Wilson, said the Ashley facility was now "heavily under-utilised", with 66 staff and an estimated annual running cost of \$8.6 million.

"Tasmania urgently needs a non-denominational, residential treatment centre to provide an evidence-based, holistic program, that is accessible, affordable, and tailored to suit each person's individual needs," she said.

Mr Trevor Reeve, Program Supervisor of the North-West Salvation Army Bridge Centre, said it made economic sense to convert the existing Ashley centre – with a 51 bed capacity – into a therapeutic, rehabilitation centre.

"Ashley is already accepted by the community where it is; as it is, therefore any 'not in my backyard' concerns should be limited," he said.

In addition, Mr Reeve said its central location would make it easier to source and retain professional staff, with an added bonus of less travel times.

According to Rural Health Tasmania, there are an estimated 25,600 'ice users' in Tasmania, but the number of residential treatment facilities with recovery beds has remained the same for years.

Come see the vocal show

THE SPOKEN Word performance poetry scene is taking off across Australia.

Now you don't need to leave Deloraine to be part of it!

Spoken Word Open Mic at the Empire on Sunday 25th of September from 2.00 – 5.00 pm.

Register to read at the door, or just come to applaud.

COMPLETE WARDROBE IN A BOX

• NO CUTTING, DRILLING OR PAINTING • D.I.Y. AND SAVE



PRICED FROM
\$749.95
INCLUDING DOORS
FOR 1800 WIDE
UNIT



- 4 MODELS DISPLAYED ASSEMBLED IN STORE
- 1800 HIGH X 1800 WIDE FROM \$749.95
 - 2100 HIGH X 1800 WIDE FROM \$899.95
 - 2100 HIGH X 2400 WIDE FROM \$1049.95

- OPTIONS
- MIRROR DOORS
 - DRAWERS
 - EXTRA SHELVES

ALL MODELS IN STOCK
TAKE HOME TODAY
comes unassembled

LARGEST WARDROBE DISPLAY IN TASMANIA

• 13 WARDROBES • 22 INTERNAL UNITS

WELL WORTH THE DRIVE – VISIT OUR SHOWROOM

SEE OUR IN STORE
DISPLAYS

LOCALLY OWNED AND OPERATED SINCE 1975
SUP-PLY
Building, Renovating & Joinery Supplies

55-59 Don Road, Devonport TAS 7310
Monday to Friday 8 - 5 • Saturday 9 - 12

Phone 6424 7266 Fax 6424 9738 sales@sup-ply.com



Kobe Leon (15) of Chudleigh plays Pokemon Go in Deloraine.

Photo by: Mike Moores

Pokémon mania

By David Claridge

IF YOU happen to see groups of people playing with their phones around the pewter statues in Deloraine, they are probably playing a game that has taken the world by storm in a short time, Pokémon Go.

In the new app, gamers can use their phone in the real world to capture these 'pocket monster' creatures, encouraging people to go outside and search for them.

Deloraine Pokémon Hunter, Connor Deckers, likes how the game is very sociable because it brings communities and groups together.

"It was the new thing that often people want to be involved with. There is a thrill in going around and finding something," he said.

"Pokémon seems to many people like a children's game, but a lot of it is playing on nostalgia. Most people I see playing it aren't kids. The youngest I've seen are young teenagers."

Local businesses are taking advantage of the renewed craze. The Empire Hotel in Deloraine has a Pokémon themed night on Wednesdays.

Westbury Pokémon Hunt-

er, Eliesha Hill, likes how the game is encouraging fitness.

"I'm walking around Westbury a lot more, with the full round trip walking to each Pokestop and gym averaging around 4.5km each day," she said.

"I'm 33, and as I was never into Pokémon growing up, I'm getting lots of advice from the younger generations playing and making new friends.

"Pokémon can spawn basically anywhere. I've even caught a few in my bedroom, so you can be travelling anywhere and suddenly a Pokémon will appear.

There are several 'Pokestops' in Westbury, such as the Village Green near the RSL as there are two gyms and seven Pokestops in a 500 metre area.

"It's nice to see something positive happening out in the community. People of all ages play Pokémon Go and it is really encouraging to see everyone interact in a friendly and helpful manner," said Ms Hill.

"If a game can bring so many different people together and rally behind others who feel like outcasts, then it's a game humanity could learn from."



Two town nosh-ups success

AROUND MID-YEAR a group of volunteers fed 50 people at a dinner in Mole Creek and 75 people at a luncheon in Deloraine using donated produce.

This was a Deloraine House project to look at ways of improving 'food access and choices' for everyone.

Diners were asked to give feedback and comments

highlighted the awareness of people going hungry in the district and the need to address this issue. At Mole Creek the idea of having a community garden was raised and initial talks to explore this possibility have started.

At Deloraine people discussed such things as having food drives, more people growing their own food, hav-

ing backyard garden blitzes, and farmers selling their excess produce.

Leading on from the dinners a new Harvest Co-operative is being set up through Deloraine House.

For more information on this venture you can call Catherine on 0427 509 409 or go to www.facebook.com/MeanderValleyHarvestCoop/

Ecological Enterprise

THERE IS not much that Justin Jones of Blackstone Heights doesn't know about waste management.

Justin's business 'Just Waste' was recently contracted by Meander Valley Council to manage its tip sites and transfer stations.

"I was born and bred into the waste industry," says Justin.

He began working in his family's waste management business when he was 18 years old, starting in collection then working his way through sales and marketing to become the general manager.

Treasure hunters will be happy when they hear Justin aims to keep prices in the tip shop as low as possible

It was then he decided to head in the direction of strategic planning and waste minimisation and started his own business.

"For the last fourteen years I've been travelling around Australia looking at waste minimisation opportunities, strategic plans, resource recovery and waste auditing," explains Justin and adds, "I also do a lot of environmental compliance especially for landfills and transfer stations,

so waste is my life."

Justin is enthusiastic about maximising waste minimisation opportunities for Meander Valley. He estimates the life of the Deloraine tip site to be around 10 years and the Westbury tip site from 3-6 years depending on what waste goes in.

"The more we can divert from landfill the longer it will stay open," he says.

To this end, Justin intends to do everything he can to make it easy for 'tippers' to recycle anything that can be recycled.

"I do a lot of work in Melbourne and Sydney, so I want to bring some of those ideas and opportunities down here."

A new program to send e-waste to Launceston based company E-Waste Tasmania has begun with 10 tonnes of e-waste already removed from the Deloraine site.

Plans are afoot to process cardboard on site with a new baler, mattresses are going to be stripped into their recyclable components and silage wrap recycling increased.

Justin is teaming with other companies to look at further processing plastics onsite and is even considering producing biodiesel.

"Organics is the big thing," says Justin. "We are looking at

- ADVERTORIAL -



L-R Hayley Manning, Jess Wall, Darryl Ainslie and Justin Jones of Just Waste; all keen recyclers.

mulching our own greenwaste here at Deloraine, then turning it into a low grade mulch that will then be available for the public to purchase."

Customer service is a key feature in Justin's business plan. "We've kept seven of the old crew. Just having that friendly face is key to customer service," comments Justin.

Bin upgrades and improved signage are also in the plan so that it's easier for people to identify what goes where.

Tipping prices will not change as Council determines prices for landfill.

The much loved tip shop is again in operation.

"We are keen to keep the tip shop open as it's all part of

the resource recovery aspect," shares Justin.

Treasure hunters will be happy when they hear Justin aims to keep prices in the tip shop as low as possible. "My philosophy is if I can get \$1 that's better than going to landfill. I don't want to have dust on the stuff. I just want to get it out."



Mayor's Message

With winter almost over, I am optimistic that we have seen the end of the bad weather events we have experienced over the past few months. During this ongoing recovery stage it is vital that as a community we continue to support the local businesses that have been adversely affected.

As is usually the case, there is a significant amount of publicity at the time of a weather event and this can impact visitor numbers in the months that follow. Whilst there are some closures still in place, for most operators it's business as usual along the Great Western Tiers Touring Route.

Personally, I cannot think of a better reason to indulge in some fabulous local produce while taking a drive in the countryside and I encourage you all to do the same.

In addition, I would like to take this opportunity to welcome Meander Valley Council's newly appointed General Manager, Martin Gill. Martin was the stand out candidate throughout an extensive recruitment process and demonstrated a clear vision for the future of the municipality.

Recently, we had the pleasure of hosting the Valley Central Prospectus launch.

The prospectus promotes the newly developed industrial precinct in Westbury and reflects the significant benefit investing in the region brings.

Valley Central is located within close proximity to important transport routes and agricultural hubs and the prospectus highlights the competitive advantages that can be gained from establishing, expanding or relocating businesses to the region.

Already attracting interest from interstate and overseas, Meander Valley's central location is an attractive choice for future industry investment.

A collaboration between a number of landowners and stakeholders, the Valley Central Industrial Precinct will be a source of benefit to the entire region and is an example of the value of establishing sound community networks and solid partnerships as we actively seek to promote the Meander Valley municipality.

For a copy of the prospectus, contact the Office of the Coordinator General on 03 6777 278.

Image L-R: John Rowlings, Mayor, Craig Perkins, Cr Tanya King & Roger Jaensch, Parliamentary Secretary for Small Business, Trade and Red Tape Reduction.

Infrastructure Update

Council has been busy with active capital works and projects initiated as a result of the June flooding. We have been busy building bridges...literally!

The contract to reconstruct the bridge at Liena Road has been awarded to TasSpan. Structural design work is expected to commence shortly and a project completion date of 23 December 2016 has been specified, subject to favourable weather conditions.

The replacement of Parson's Road bridge has been completed and work on the bridge at Big Den Road is in the process of being finalised. In addition, the replacement of the bridge on Union Bridge Road is almost complete with the new bridge now open to traffic and the temporary bridge removed from site.

New vision for Meander Valley Council

Martin Gill has been appointed as the new General Manager for Meander Valley Council.

Formally the Director of Development Services, Martin was the preferred candidate from a number of talented applicants that undertook an extensive recruitment process.

Mr Gill is looking forward to getting to know constituents and better understand how the community wants to see the municipality grow.

With a background in architecture, teaching, planning and strategic development, Mr Gill was able to demonstrate that he had a clear vision for the region.

"When applying for the General Managers role I was asked to articulate a vision for Meander Valley. While most of us have some sort of idea about what we want to achieve in our career, it is rare that you get an opportunity to think about what your vision might be for the community you serve and the place you work.

The majority of the minor road repair works associated with the June flood event have now been completed with the exception of some sites that still require road surface sealing. There are still a small number of sites where more significant road reconstruction is required and these projects are being progressed through design and tender phases.

The Department of State Growth is completing preliminary works on Olivers Road and Council understands that their works program is expected to be completed by early October pending the continuation of favourable weather conditions.

Within parklands and recreational spaces there are still a small number of sites that require removal of debris and repairs which have been delayed due to limited access and soft ground conditions.



Among the ideas that I presented were that I wanted us to continue to be people and customer focused, for my staff to be problem solvers and decision makers and for us to be an organisation that is smart, consultative and always improving".

Excited by his new appointment, Mr Gill is conscious of the importance of the role of agriculture in the region and the opportunities that stem from living in "one of the most beautiful places in the world"

Mr Gill's immediate focus will be to oversee infrastructure projects and the ongoing flood repair work.



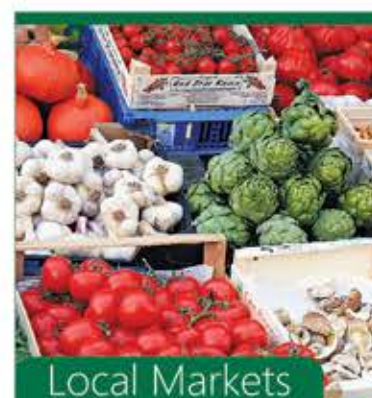
Spring cleaning?

Remember to always secure your load when traveling to any of the waste management sites across the region.

Rubbish that is unsecured is easily dislodged from trucks, trailers and ute trays and drivers may not be aware that a portion of their load has been inadvertently strewn along the roadside.

Vehicle owners are liable for all litter lost from vehicles and trailers and, Council officers are required to carry out periodic cleanups, especially along roads that are en-route to the refuse sites.

If you are considering a spring clean this year, remember to secure all your loads before travelling to the refuse sites as dislodged and lost items are unsightly and can cause traffic hazards.



- ### Local Markets
- Deloraine Market**
First Saturday of the month
Showgrounds,
Highland Lakes Road, Deloraine
 - Liffey Market**
Second Saturday of the month
Old Liffey School,
1443 Liffey Road, Liffey
 - Mole Creek Market**
Third Saturday of the month
Mole Creek Memorial Hall
Caveside Road, Mole Creek
 - Westbury Market**
Third Saturday of the month
St Andrews Church
11 Lonsdale Promenade,
Westbury

School Holiday Fun

BOOK NOW

- Bike & Skate Day** Westbury Skate Park 10am-2pm (6-18 yrs)
29 September. Cost: Free (includes barbecue)
- Airtime 360 & Zone 3 Laser Tag** 2pm-6pm (11-18 yrs)
30 September. 14 places available. Cost: \$25 per person
- Mountain Bike Ride** 9.30am-4pm (11-18 yrs)
4 October. 14 places available. Cost: \$10 per person
(bikes & helmets provided)

To book phone 0400 155 690, email vicki.jordan@mvc.tas.gov.au or visit www.meander.tas.gov.au



Awarded for Excellence!

An abundance of outstanding customer service reviews have secured the team at the Great Western Tiers Visitor Centre the 2016 TripAdvisor Certificate of Excellence.

Established in 2010, the Certificate of Excellence is awarded to those providers that consistently offer great service.

In order to be eligible to receive an award, the Visitor Centre must have maintained a minimum four out of five rating on the TripAdvisor website for at least twelve months.

Recognition of outstanding traveller reviews is a direct reflection of the hard work undertaken by the staff that promote our region throughout the year.

Their efforts go a long way in ensuring visitors return again and again.

Well worth a visit, the Visitor Centre hosts the amazing Yarns exhibit, pioneer walk and museum. Rich in local history, the staff are well equipped to supply you with all the information you need to discover the magic of the region.

With a free accommodation, itinerary and tour booking service, now is the time to explore the municipality's hidden gems.

To discover more visit www.greatwesterntiers.com.au, phone 6362 5280 or call in and experience the outstanding customer service for yourself.



Philippa Hirst, *Looking South from St Mary's, Hagley (detail)*, 2015

Meandering 2016 • Opens 24 September

Join us in celebrating this annual arts competition, now in it's tenth year.

View outstanding works of exceptional quality created by local artists depicting their impressions of the 2016 Vital Signs theme.

Artworks will be on display during business hours at Country Club Tasmania until 28 October and at Durham Gallery at Elemental Artspace in Deloraine for the month of November.

Artworks will be for sale. Admission is free.

Upgrade commitment for Prospect Vale Park

Recently, Council committed to undertake surface upgrades to Prospect Vale Park as part of the Prospect Vale Development Plan which was established in 2012.

The upgrades to the AFL Ground will involve a new drainage system and re-profiling of the playing surface. In addition, an automated irrigation system will be installed which will improve maintenance efficiency and water use.

Prospect Vale Park is one of the most utilised recreational grounds in northern Tasmania and the recent wet weather has had a significant impact on the playing surface. The upgrade

will provide users with a safer and more consistent playing surface that meets current standards. "Users of the park have been inconvenienced on a number of occasions due to the wet conditions of the ground and forced to either not train or not play," Meander Valley Mayor Craig Perkins said.

The upgrades will facilitate better drainage and the facility will be able to be more reliably accessed by patrons throughout the year. \$480,000 has been committed to the upgrade which is expected to take about three months. Work will commence in late September.



Rob Burnett Photography

Open for business

The wet weather events have resulted in a decline in visitors to the region when operators need them most. Now is the time to revisit some of the regional attractions as a way of supporting the ongoing flood recovery effort. While some attractions and walking tracks have sustained flood damage and remain closed, most are still open for business.

Along the Great Western Tiers Touring Route, Meander Falls, The Raspberry Farm, ETC, Ashgrove Dairy, Van Diemen's Creamery, Alum Cliffs, Trowunna Wildlife Sanctuary and King Solomon's Caves to name a few, are all open.

Entally House, Liffey Falls and a number of walking tracks listed by the Parks and Wildlife Service still remain closed, but it is worth keeping an eye on their websites for regular updates.

For more information visit www.greatwesterntiers.com.au or phone 6362 5280



Call for new Committee Member (TRAP)

Council is seeking a representative from the community to be part of the Townscapes, Reserves and Parks Special Committee (TRAP).

This special committee is comprised of a number of community representatives, three Council Officers and three Councillors.

The role of the Committee is to advise Council and consult with the community on the strategic development of townscapes, reserves and parks, monitor their maintenance and facilitate their improvement.

The committee currently meets at 5.30pm on the third Wednesday of every second month at the Council Offices, 26 Lyall Street, Westbury.

If you would like an opportunity to contribute to this committee please post your expression of interest to David Pyke, PO Box 102, Westbury, 7303.

For further information, please phone 6393 5316.

HARD WASTE COLLECTION

REGISTER NOW

Registrations are now open for the annual hard waste collection. You must register by Monday 24 October to receive the hard waste collection service.

To register for hard waste collection phone 6393 5300 or for more information on collection dates and times visit www.meander.tas.gov.au

Need to contact us?

General Enquiries

Phone 6393 5300
Mail PO Box 102 Westbury Tasmania 7303
Email mail@mvc.tas.gov.au

Customer Service Office

Monday - Friday 8.30am - 5pm
26 Lyall Street Westbury Tasmania 7303

Connect Online

www.meander.tas.gov.au

[f meandervalleycouncil](https://www.facebook.com/meandervalleycouncil)
[@mvcouncil](https://twitter.com/mvcouncil)



Top Shots Bring Success in Press Awards



'Bringer of fire' and 'Rodeo fun for Rattle N Hum' photos by: Mike Moores

MEANDER VALLEY Gazette photographer, Mike Moores, received high commendation for two of his pictures entered in the 2016 Victorian Rural Press Awards.

'Bringer of Fire' taken at Winter Fire in 2015 gained second place in the general interest category and 'Rodeo fun for Rattle N Hum'

took second place in the sports section.

Recognition of his talent extended to the 'Photographer of the Year' section where he received second place. The Awards showcase and recognise the best journalism and photography across rural/regional Victoria and Tasmania. Well done, Mike!

All Weed Solutions

Chemical spraying specialists
 Boom spray Spot spray
 Cut and paste
 Certified, licenced and experienced
 Fully insured

ANY WEED, ANYWHERE!

For a free quote, phone
Maurice on 0438 081 473
 Email: allweedsolutions@bigpond.com

Thespian offering of one act plays

THE FESTIVAL of One Act Plays is back in October, in a continuation of The Deloraine Dramatic Society's illustrious history.

The DDS was formed in 1951, and in 1955 the first Youth Drama Festival was held, which has continued to the present.

Previously known as the Senior, and later the Adult Drama Festival, the inaugural Festival of One Act Plays was performed in 1981.

Traditionally, participants have come from all over Tasmania: Burnie, Ulverstone, Devonport, Launceston, Rowella, Scottsdale, Deloraine, Hobart, as well as interstate. However, in recent years participants have mostly hailed from Hobart.

Festival Director Patricia Woods was asked by the Society to organise the first festival, drawing on her experience with Inter-varsity Drama Festivals when a student at UTAS.

"The main appeal to me

of the Inter-varsities was the idea of living theatre for a whole week and being totally absorbed in drama." A week was not feasible for the Deloraine festival, which instead became an immersive weekend. An important component is the social aspect, bringing a party atmosphere to the competition.

At \$5.00 per person per session and an invitation to supper afterwards, it is a wonderful opportunity to see live theatre locally.

The festival has run to a similar format since its inception: Friday performances and adjudication, then a party to which the audience, as well as cast and crew, are invited. A Saturday afternoon session and adjudication, where participants go out to dinner in Deloraine. This is followed by a night session and adjudication, after which everyone is again invited to party.

Awards for Best Actor, Best Actress, and Best Production are then announced. The winners toast their success with champagne in the silver goblets included as part of the perpetual trophy.

While the festival has been well attended by out-of-towners, Patricia is hoping for a good turnout from local audiences as well this October. Around 14 plays in total are performed over the course of the festival.

At \$5.00 per person per session and an invitation to supper afterwards, it is a wonderful opportunity to see live theatre locally.

This year's Festival will be held at The Little Theatre on the 14th and 15th of October. Please BYO drinks.

Those wishing to perform must complete their entries by the 30th of September.

For more information, contact Patricia Woods by phone on 0409 568 291. Entries will not be accepted after the closing date.

Pay load at Overload Choral feast

By Wendy Laing

DELORAINÉ HOSPITAL gallery launched an art exhibition called Overload on 29th July.

Showcasing thirty artists who, using a variety of mediums, have expressed their ideas how their art relates to Haemochromatosis - a genetic excess iron disorder.

The Deloraine Curator for the exhibition, Sheila Stevenson, thanked the guests for attending the launch.

She then introduced Sarah Weaver, artist and Overload curator, who briefly explained that Overload art exhibition began in Hobart in 2012.

It was also held in Launceston in 2014 and has

been held in Deloraine during 2015 and 2016.

Mrs Stevenson then introduced Guy Barnett MP, who officially declared the 3rd Northern Tasmania Overload exhibition open.

During the evening, guests at the launch were asked to vote for a people's choice award.

Young artist Liam Rudolf won this honour for his oil on canvas entitled 'On the Ledge'.

The Overload exhibition is open to the public in the Deloraine hospital gallery until the 5th November, 2016.

The art work may be purchased and thirty percent of monies raised from each sale will go to help fund Haemochromatosis Australia.

The Meander Valley Choir will hold their annual concert at the Westbury Uniting Church Hall, Westbury on the 25 September beginning at 2pm.

Special guests include students from Our Lady of Mercy and two solo singers Nina Gibson and William Kelly accompanied by Amelia Reynolds and many more entertaining items.

The money we raise this year is to go to the "Blazeaid" people who have been helping people affected by the floods.

Everyone is welcome, cost is \$10 per adult, under 16 years free, afternoon tea will be provided after the Concert.

Western Tiers Heating & Cooling Solutions



SALE



Supply and installation of Daikin
FTXS50L 6-7.7Kw \$2350.00

ARCtick
 CERTIFIED

free measure and quote on other models and brands

Spring cleaning? Air conditioning service and drain flush \$88

Sam Ziesel 0423 797 835

* install back to back installation only and not including any potential switchboard upgrades

ARC NO. AU35438

Tanya Cooper
 Principal

COOPER ACCOUNTING PLUS

Annette Powell
 Senior Accountant

Small & Large Businesses
 Detailed and sensitive personal attention

Specialising in:

- Taxation, Accounting & Audit Services
- BAS, GST & Fringe Benefits Tax
- Self Managed Superannuation
- Retirement & Succession Planning
- Primary Production
- Retailers
- Trades and Construction

Now in Deloraine at 3/58 Emu Bay Road 6331 5838
 Also in Launceston at G1, 26 Elizabeth Street 6331 5838

ADVERTISEMENT

Mark Shelton MP

Liberal Member for Lyons

Working to
strengthen regional
communities

Please do not hesitate to contact me if I can be of any assistance to you.

10A Marlborough Street
Longford TAS 7301
p: (03)6324 2080
e: mark.shelton@parliament.tas.gov.au

Authorised by Mark Shelton, Parliament House, Hobart, TAS 7000

A pleasing propagation : Trees of knowledge

By Lorraine Clarke

UNDER THE banner of the Small Farm Living Program, Oliver Strutt of The Understorey Network (USN) and Kate Thorn of Natural Resource Management North (NRM), recently held a native plant propagation workshop in Westbury.

This was attended by 15 locals living in town, on hobby farms or larger rural properties, all eager to learn how to grow their own endemic species from seeds and cuttings.

Some people opt to landscape their gardens only with Tasmania's indigenous plants.

Restoration of native habitat's is crucial for the survival of many wildlife species.

The forty-spotted pardalote, one of our most endangered birds, is reliant on stands of white gum (*Eucalyptus viminalis*) which are becoming depleted. This is the focus of a USN project funded by the Australian Government's Caring for our Country program.

Volunteers in the project enjoy raising native grasses, herbs, bushes and trees from seed for others to plant. Native seeds are collected by bush walkers in summer and

degraded environments are revegetated at low cost with home-grown seedlings.

It is important to preserve plants and trees endemic to one's own locality as they are the best-adapted, so have the optimum chance of survival.

In rural areas, Tasmanian forest species serve multiple purposes, as wind-breaks for crops and livestock, biodiverse native habitat corridors, honeybee forage, beautifying the surroundings, property value enhancement, and perhaps eventual timber harvest.

Everybody left the workshop with useful information, armloads of potential new plants, and confidence to practice these skills at home

Oliver assured workshop participants that growing their own plants from seed or cuttings is easy and fun.

Seed raising mix and tree tubes were supplied for prospective members at the workshop to sow their own choice of native plants and trees. Surprisingly, some Tasmanian natives readily grow from cuttings, and a selection of leafy branches was dissected and potted up.

Oliver also distributed some fast-growing *Goodia lotifolia* seedlings he had sown a few months earlier, so everybody left the workshop with useful information, armloads of potential new plants, and confidence to practice these skills at home.

Annual membership of \$44.00 gives access to USN's many benefits such as field days and workshops, a handbook, learning propagation skills, and materials to grow up to 250 seedlings for your own use or for others.

Kate Thorn also invited participants to join NRM's Smallholding Property Management Program, whose aim is to encourage and support sustainable land use and management on properties of about 1 to 100 ha, helping landowners to realise the potential of their properties.

A site visit by NRM staff is invaluable for assisting in identifying issues and actions on the ground, particularly those relating to environmental management.

Limited funding is available for provision of e.g. coreflute tree guards, to USN members who grow up to 250 of their own trees. To find out more contact USN on 0407 352 479 or NRM on (03) 6333 7777.



Photo by: Mike Moores

(L to R): Lybby Radford (15) Mole Creek, Tiara Thomas (15) Westbury, teacher Mick Dalton, and Lee Morrison (15) of Chudleigh.

STUDENTS FROM Deloraine High School participated in National Tree Day and Schools Tree Day.

Each year, around 200,000 Australian school students participate in Schools Tree Day. The program gets kids into nature, instils a love for the great outdoors

and teaches them about environmental stewardship and taking care of the planet.

Forestry Tasmania Perth Nursery provided Deloraine High School with a variety of native plants.

Students are proud to be working to improve their school and our surroundings.



First in real estate



ARE YOU THINKING ABOUT SELLING YOUR PROPERTY?

OR

ARE YOU WANTING TO UPGRADE TO MORE ROOM OR DOWNSIZE?

ARE YOU A LANDLORD WHO WOULD LIKE YOUR INVESTMENT PROFESSIONALLY MANAGED?

ARE YOU AWARE OF THE CHANGES TO THE RESIDENTIAL TENANCY ACT??

SAVE YOURSELF ALL THE HASSLE AND LET US DO THE WORK FOR YOU.

Contact our Office to arrange your **FREE** confidential appraisal.

From the smallest home to the largest property we are here to help.

First National Real Estate Deloraine are here to stay.



Director & Managing Agent - Brian Claridge 0417 352 419

Property Port Folio Manager - Trudy Claridge

60 Emu Bay Road, Deloraine

www.delorainerealestate.com.au

6362 3570

Business as usual on the road to Cradle

By Heather Summers

SPRING HAS sprung and the warmer weather is the perfect excuse to get out and about to see what's happening in Meander Valley.

Despite extreme weather events experienced in the last

12 months, there are still plenty of things to see and do in this beautiful part of the world.

Following the foodie trail is a fun way to explore the region. After sustaining flood damage, 41 Degrees Salmon and Ginseng Farm are up and

running again near Deloraine.

Along with other familiar destinations like Ashgrove Cheese, Christmas Hills Raspberry Farm and Melita Honey Farm at Chudleigh, you can plug in to the local cafe culture, and enjoy

community art centres along the way. Deloraine is a great arts hub, as a walk down the main street will confirm.

Located at Mayberry, Marakoopa Café will be re-opening on the weekend of the 24th and 25th of September as part of Blooming Tasmania Open Garden Trail, and then every subsequent Sunday. A great cafe and live music venue, it is well worth a visit.

Many are under the misapprehension that Cradle Mountain is inaccessible via Mole Creek.

Wychwood Gardens also experienced flood damage, and while not planning to officially open until the end of October, it will open its gates especially for the Open Garden Trail on the last weekend of September.

Entally House has re-opened this month, a lovely flashback to Tasmania's early years. A wander around the historic village of Westbury further down the road is also rewarding.

Stop off at the local History Rooms in Lyall Street.

Many are under the misapprehension that Cradle Moun-

tain is inaccessible via Mole Creek. This is not the case, as access is open through Paradise Rd. Vicki Pryer of the Great Western Tiers Visitor Centre encourages people to come and visit them for up-to-date information. "We are getting daily updates on what is happening in the area, so make us your first port of call," she suggests. Their website is also a great place to start.

While many of Meander Valley's renowned destinations for natural beauty were affected by the recent heavy weather, King Solomon's Cave was left undamaged and is open for business as usual.

Alum Cliffs is accessible, as is Westmorland Falls, although caution should be exercised. Check with the Visitor Centre in Deloraine for information on other sites.

Minister for Infrastructure, Rene Hidding, has allocated \$8.7 million for urgent works in the North and North-West due to the damage caused by the June flood.

As the gateway to the North-West, and with its proximity to Devonport and Launceston, the Valley area is a great place to start exploring. The only question is, where to begin?



Lily Webb (8) & Eliza Webb (6) from Adelaide enjoying an icecream at Melita Honey Farm, Chudleigh on their way to Cradle Mountain while holidaying with mum and dad. Photo by: Mike Moores

Marakoopa open garden with music

By Wendy Laing

LARS AND Sarah Cooper decided to start operating the Marakoopa Café about four years ago to offer the only refreshment facilities available in their area.

Mr Cooper said that they thought it would also be a good idea to have other options available on-site to supplement the Marakoopa Caves system.

This became evident when the local June floods caused the cave to become excessively damaged. The cave is unlikely to be open until

December, 2016.

To complement the café, the Coopers have added a room onto the café where artists can regularly perform and, if the weather is agreeable, concerts can also be held outdoors.

These musical afternoons have become very popular.

Mrs Cooper said that they had a wonderful evening on Saturday, 20th August with the amazing Bity Booker as the guest artist.

She added that Monique How, the support act from Liena, is becoming a very

accomplished artist.

An Open Garden is planned for the weekend of the 24th and 25th September.

There will be live music playing as guests wander through the gardens.

Food and drinks will be available from the café.

Mrs Cooper said that they intend to hold Open Garden days on a regular basis throughout the summer months.

As soon as the Marakoopa Caves become accessible, the Café will be open for business again.

Meander house of hope (continued from P1)

SUMMING UP the program Tanya says, "Its about these mums and kids, and giving them some hope and helping them get their lives back on track and the community being part of that."

Residents of Meander and surrounds continue to be divided in their support for Council's decision to lease the old school to Teen Challenge.

A number of locals have erected welcome signs and offered to help in any way they can.

Christine Chilcott is firmly on the pro side. "When our school closed, we lost an identity within our community. I just feel we can bring the community back together

again by having a purpose." "This is our chance to make a difference."

On the other hand 50 people have come together to incorporate the Meander Area Residents and Rate Payers Association (MARRA).

President, Bohdi McSweeney says that notice has been served on Council that MARRA will be taking legal action if the lease of the school to Teen Challenge goes ahead.

"We believe the school should stay in public hands and the process of Teen Challenge becoming the successful proponent was inadequate and excluded community involvement," explains Bohdi.

Tax help in Westbury

TAX TIME 2016 is underway and the ATO has opened its Tax Help centres in community centres across Tasmania.

Assistant Commissioner Graham Whyte said that 22 volunteers from 17 community centres across Tasmania will be supporting people who need assistance completing their tax returns this year.

"We know that for many Australians doing their own tax return can be a bit difficult, that's why we have Tax Help," Mr Whyte said.

Tax Help is available until 31st October. To check eligibility, go to www.ato.gov.au/taxhelp. For your nearest Tax Help centre, phone 13 28 61.

Create a myGov account before visiting a Tax Help centre. Go to www.my.gov.au

RETAIL DIRECTORY

Advertising enquiries to: advertising@meandervalleygazette.com

Phone 6286 8216

Bec's Town & Country Clothing

- mens and ladies fashions •
- western gear • work gear •
- Akubra hats ...

32 Emu Bay Rd DELORAINE
Phone 0428 812 115

GOSLING Giftware

Come and have a gander!

STEAMPUNK

Goth

ZIPPOS DRAGONS

Shop 2, 53-55 Emu Bay Road,
Deloraine, ph: 6362 2447

Laybys welcome

DELORAINE JEWELLERS

covering all the Meander Valley

We have one of the largest ranges of quality jewellery in Tasmania.

We also stock an extensive range of giftware for all occasions.

49a Emu Bay Road
DELORAINE
Phone: 6362 4001

Like us on Facebook

SPRING INTO ACTION

GOOD SPORTS

fitness equipment
footwear and clothing
camping and fishing supplies

36 Emu Bay Rd DELORAINE
Phone 63624118

COMMUNITY DIRECTORY



To place a not-for-profit advertisement please phone 6286 8216

SPONSORED BY MEANDER VALLEY ONLINE INC

ROTARY CLUB OF WESTBURY CAR SHOW

Sunday 23rd October

Westbury Village Green

'New and Old'

Anything on Wheels

Trade stalls welcome

Proudly supporting local charities & motor neurone disease

For enquiries, please contact David Lee 0408 747 374



LOCAL FOOD FOR LOCAL PEOPLE

would like to thank the following people for their support and produce donations for their recent luncheons:

Kevin and Dianne Huett, Libby Beyerle, Tim Doyle, Kelly Ruckert, Stephanie Honey, Patrick Gambles, Steve Johnson, Tomoko and Trevor Woods, Karen Miles, Carolyn Scott-Burgess, Elena Olah, Charlie Keane, Sakura Woods, Georgia Burgess, Mary-Jane Gerson, Julie Hargreaves, Narelle Whatley, Catherine Smith, Jill Harvey, Meika Webb, Claire Capper, Elder Wahlquist, Elder Symons, Lisa Kelly, Megan Brinsmead, Terry Szabo, Berice Van der Aa (and the Trade Training Centre), Deloraine Fruit and Vegetable Shop, 41° South Salmon & Ginseng Farm and Café, Mole Creek Hall Committee, Western Tiers Community Club and The Circle Dance Band.



Deloraine Online Access Centre

- Computer Courses
- Internet & Wi-Fi
- Printing & Scanning
- Learn in a friendly place
 - LINC services
- Technology help & advice
 - Games Nights

Phone: 6362 3537
21 West Parade,
Deloraine TAS 7304

Western Tiers Film Society

See award-winning films each month at the Little Theatre Cinema

Memberships available now at:
westerntiersfilmsociety@gmail.com
or call 0418 389 868



Arts Deloraine

Promoting the arts in the valley - concerts, plays and exhibitions

Join to become involved as well as to get discounted entry prices.

For info call Annie Robinson on 0419 134 946
artsdeloraine@gmail.com
or join at
Elemental Artspace



Connecting People with People. Around the region, around the world.

Meander Valley Online (Inc) actively supports the Meander Valley community by providing:

- 2 online Centres for internet & training in Deloraine and Mole Creek
- the publishing of *Meander Valley Gazette*
- the sponsoring of this paper's Community Directory
- Technical IT Support valley-wide for home & small business

Established January 1998



Mole Creek Online Access Centre

- Computer Courses
- Internet & Wi-Fi
- Printing & Scanning
- Learn in a friendly place
 - LINC services
- Technology help & advice
 - Modern facilities

Phone: 6363 2030
48 Pioneer Drive,
Mole Creek TAS 7304

Events Diary

Planning an event? Then make sure everyone knows about it. Simply email the details to editor@meandervalleygazette.com - remember to plan in advance so you don't miss out!

Date and Time	Event	Details
Saturday 10th September 7.30pm	Western Tiers Film Society	Little Theatre, 2 Meander Valley Rd, Deloraine. "45 Years" Drama, UK, Rated M, 95 mins.
Monday 12th - 16th September 6.30pm	Deloraine Youth Drama Festival	Little Theatre, 2 Meander Valley Rd, Deloraine.
Friday 16th September 9.30am - 5pm	Friendship Festival	Connecting young people, Rotary Pavillion Alverston Drive Deloraine. Nate Austen: 0427 543 365.
Saturday 17th September 1.30pm	Deloraine Youth Drama Festival	Little Theatre, 2 Meander Valley Rd, Deloraine.
Saturday 17th September 7.00pm	Deloraine Jazz Club	Empire Hotel, 19 Emu Bay Road, Deloraine. Cover charge: \$10.00.
Sunday 18th September 12.00noon	Bearded Buddies of Tasmania (Schnauzers)	Deloraine Train Park. Info: beardedbuddies.tas@gmail.com www.facebook.com/groups/BeardedBuddies
Monday 19th September 10.00am-2.00pm	Sri Lankan Cooking Class	Deloraine House, 112 Emu Bay Road, Deloraine. Cost \$15.00 includes lunch. Ph: 6362 2678 to book.
Thursday 22nd September	Blokes Day out	Don River Railway (ride \$15.00 or museum \$12.00). Bookings required. Ph:6362 2678. Bring lunch, drink & coat.
Saturday 24th & Sunday 25th September	Open Garden with music	Marakoopa Café, 186 Mayberriy Rd, Mayberry. Ph: 63635033.
Sunday 25th September 2.00pm-5.00pm	Open Mic at the Empire (poetry)	Empire Hotel, 19 Emu Bay Road, Deloraine. Register to read at the door, or just come to applaud!
Sunday 25th September 2.00pm	Meander Valley Choir & Community Concert	Uniting Church Hall, William St. Westbury. \$10.00 (children free). Afternoon tea. Support BlazeAid in Tasmania.
Monday 3rd October 12.00pm- 2.00pm	Eating with Friends	Deloraine House, 112 Emu Bay Road, Deloraine. Great meal & good company. Cost \$5.00.
Tuesday 4th October	Mountain Bike Ride	Residents of Meander Valley Students 11-18yo. Limited numbers. To book Ph: 0427 543 365 Nate Austen.
Saturday 8th October 7.30pm	Western Tiers Film Society	Little Theatre, 2 Meander Valley Rd. Deloraine. "Room" Drama, US, Rated M, 117mins.
Monday 10th October- Friday 2nd Dec.	Meander Valley U3a	Term 4 begins. Ph Marg Leedham: 0409 892 462 for details re registration or meandervalleyu3a@gmail.com
Monday 10th - 14th October	Meander Valley Festival of Creative Aging	Various venues in Deloraine. A week long celebration of music, art, dance, radio, singing etc. Ph 6362 8300.
Tuesday 11th October 12.00 for 12.30pm	Seniors Week Luncheon	Western Tiers Community Club, Parsonage Street, Deloraine \$10.00 Bookings essential Ph: 6362 2678
Wednesday 12th October 6.00pm	Festival of Ageing - Listen to your Heart (film)	Little Theatre, 2 Meander Valley Rd, Deloraine. Bookings essential. Ph: 6362 8300. Free event.
Thursday 13th October 2.00pm - 4.00m	Seniors Week - Westbury U3a	Westbury RSL & Village Green. Ph: 0409 892 462. marg.leedham@bigpond.com
Thursday 13th October 10.00am - 3.00pm	Seniors Week Activities	Italian Club, Meander Valley Hwy, Prospect. Enquiries Ph: 6701 2150.
Friday 14th October 6.00pm	Festival of Creative Aging Celebration Dinner	Deloraine Bowls Club, Meander Valley Hwy. RSVP 6362 8300 by 5th Oct. Dinner & Dance \$35.00 or Dance \$10.00
Friday 14th - 15th October	Festival of One Act Plays	Little Theatre, 2 Meander Valley Rd. Deloraine. BYO Drinks. For more info Ph: Patricia Woods 0409 568 291.
Saturday 15th October 7.30pm	Lions Club of Westbury Fish Feast	Quercus Park, Carrick. Ph Lyn Dent - 0439 639 731 to book a table. RSVP by Friday 7th October \$35.00 per head
Thursday 20th October	Blokes Day out	Mountain Stream Fishery Targa. Free entry. Rod hire available. Bookings required. Ph:6362 2678.
Saturday 22nd October 12.00pm	School Reunion -1956 Grade 9 Del District School	British Hotel, Emu Bay Deloraine. Ph: Robin 0427 622 161 or Frank 6362 2659 for more information.
Saturday 22nd October	150th Anniversary Bracknell Primary School	Bracknell Primary School, 53 Jane Street incl. Sheepdog trails, Wood chopping, sheep shearing, gumboot toss.
Saturday 22nd October evening	Old Time Dance	Bracknell Town Hall. Everyone most welcome.
Sunday 23rd October	Car Show - Rotary Club of Westbury	Enquiries Ph: 0408 747 374 David Lee.

SERVICES DIRECTORY

Advertising enquiries to: advertising@meandervalleygazette.com

Phone 6286 8216

Massage Therapy
with **Brea Harker**

Home based treatment room offering massage and other body treatments, including

- remedial/deep tissue •
- relaxation • hot stone • facials • and more ...

Diploma Remedial Massage, 9 years experience
phone 0401336943
email breharker@gmail.com

Divine Energy Flow

LEARN HOW TO HEAL YOURSELF USING YOUR BREATH

Joanne | 0488 029 109
divineenergyflow.com.au

rockpaper

HAIR STUDIO
UNDER NEW MANAGEMENT

Brooke and Caitlin welcome old and new clients

Open Monday – Friday
0447 774 798

Theresa L. Hatton
BUILDING DESIGNER

Individual Building Design
Creating individual living spaces for you.

Don't know where to start? Get help with your new home, home addition, garage or deck.

25 years experience in creating quality outcomes. Solving your problems large or small.

Designing individual projects for you.

03 6334 7144
theresa.hatton@bigpond.com
www.theresahattonbuildingdesign.com.au

Jason Griffith
Cabinet Making

The Building, Renovation, Kitchen, Bathroom & Plastering Specialist.

25 years experience
Reasonable Rates!

MOBILE: 0417 522 276
A/H: (03) 6362 2972

Top quality service
Friendly advice

TASMANIAN TRASH TRANSFORMERS

8 MEANDER VALLEY ROAD
HAGLEY, TASMANIA

SHARON:
0412 113 799

TONY:
0438 068 517

OPEN
Thursday to Sunday
10am to 4pm

LANDSCAPE SUPPLIES (deliveries available)
NEW & USED SHOP
MACHINERY HIRE (ring for quote)

Tiling
Bricklaying
Gyprocking
Rendering
Bathroom & Kitchen Renovations

Over 30 years' experience

Contact: Mark
0487 742 112

Deloraine UPHOLSTERY

Re-upholstery and repair of all types of furniture

Peter & Julie Larcombe

For all your upholstery supplies, including a large range of fabrics

Phone: 6362 2093 or 0400 622 094
102 East Barrack Street, Deloraine Tas 7304

Graham Automotive & Fabrication

Welcoming Andrew Briggs to the Team

All Mechanical Repairs & Servicing
Metal Fabrication & Welding
Approved Inspection Station (AIS)

Old Butter Factory
155 Mole Creek Road,
Deloraine
Heath Graham
Workshop: 63 622 955
Mob: 0403 400 632

Meander Valley Motorcycles
(Adam Doyle)
Qualified Mechanic
Service and Repair to all makes and models

Phone: 0439 750 860

DIAGNOSIS, SERVICE, ENHANCEMENT & CUSTOMISATION

THE FENCE BOSS
Let us build that fence

GALEN WEAVER
0487 183 825

- Post Ramming
- Rural Fencing
- Wallaby Fencing
- Electric Fencing

Woods Auto Centre

for all your Automotive Services

Woods Auto Centre specialises in a range of mechanical repairs from diagnostics & repairs to tuning & servicing

Les Woods

Ph: 03 6362 2632 E: les.woods1@bigpond.com
M: 0427 622 332 75 Emu Bay Road, Deloraine, Tas 7304

RADIATORS PLUS
the cool guys

- ✓ Radiator repairs, cleanouts, new radiator assemblies
- ✓ Truck and industrial radiators
- ✓ Custom made alloy radiators
- ✓ Tig welding fabrications
- ✓ Fuel tank repairs
- ✓ Fast friendly service
- ✓ Brand new clean enviro friendly workshop

6 Shamrock Street, South Launceston
Phone 6334 8722

www.radiatorsplus.com.au email: radiatorsplus@bigpond.com

sunrise trailers

trailers, trailer components & steel sales

111 Emu Bay Road
Deloraine, Tasmania 7304

phone: Ricky 0409 052 761
Michelle 0407 052 701
email: sales@sunrisetrailers.com.au
web: www.sunrisetrailers.com.au

Westbury Automotive

- Full Log Book Servicing
- Approved Vehicle Inspection Station
- Automotive Diagnostics
- All Mechanical Repairs

Brendan Jones
Meander Valley Hwy, Westbury
Ph: 6393 1562
westburyautomotive@gmail.com

TACC facebook

Westbury Mufflers & Exhausts

DENNIS TUCKER
MOBILE: 0408131178
HOME: 63931572

Thank You!
For letting these businesses know you saw their advert in *Meander Valley Gazette*

Advertising With Us Is As Easy As ...

- 1 Choose the type of advert that's best for you: Display, Services Directory, Community Directory or Classifieds.
- 2 Have your Display or Services Directory advert professionally created by Deloraine Signs or your design agency. For a Classifieds advert simply phone us or fill out a form. Choose to add a **Bold Headline** for more impact!
- 3 Pick up the phone and speak to our friendly team, who will guide you through the process and take your booking.

For Display & Service Directory ads phone 6286 8216 (leave a message, it will send an email). For Classified ads call 6286 8216.

SHERRIFF'S PLUMBING

SERVICING MEANDER VALLEY FOR OVER 40 YEARS

- All Plumbing and Drainage
- Sewer Jet Drain Cleaning
- Drainage Camera
- Cable and Drain Locations
- Solar Hot Water
- Backflow Prevention
- Concrete Cutting and Coring
- Filtered Water systems



Find us on Facebook

David 0417 104 467 - Simon 0408 622 279

VanDiemensLand IRRIGATION STATEWIDE

Statewide trenching and irrigation specialists

- trenching – Ditch Witch, excavator, backhoe
- installation, supply and/or install of pvc and poly statewide
- irrigation system – trench and install all pipes and fittings
- stock water – vibrating ripper plough
- drainage – trench and install drain coil
- poly welding, butt welding – electro fusion, dam
- outlets – pump shed fit outs



Contact us for a quote: Rob Ikin on 0408 131 692
www.vdlirrigation.com.au

CURRENTLY WORKING IN DELORAINE AREA

MIGHTY SKIPS
2 & 3 CUBIC METRE SKIPS
mightyskips@gmail.com

Skip Bin HIRE for Rubbish Removal

Drop off and pick up service from \$195
Tim Dawkins
Phone: 0400 087 854

HBC

Hadyn Brewer Construction

- New homes
- Renovations
- Heritage work
- Quality work
- Extensions
- Concreting

Call to discuss your next project
0438 380 710

PARADISE HOMES
BUILDING CONTRACTORS & DESIGNERS
Specialising in NEW HOMES & EXTENSIONS

For an obligation-free quote, phone Shane Steers
Mobile: 0427 912 414
Home: 64912 414
Accreditation Number: CC1928N

NIGEL'S PUMPING SERVICE

Regularly servicing your area

Locally owned and operated

Avoid expensive plumbing bills - Have your septic tank pumped every 2 years

We offer:

- Septic tank and grease trap pumping
- Sludge removal
- Portaloo's

For prompt and reliable service please call Nigel's today on

0419 154 475

DIG-EZI LANDSCAPING

0408 543 132

- Driveways
- Lawns
- Paths
- Paving
- Concreting
- Retaining Walls
- Trenching
- Drainage
- Post Holes
- Shed Sites
- Log / Rock Grab

dig-ezi.com.au

AWARD-WINNING BUILDERS

- house and land packages
- investments
- new home specialist
- free quotes

www.crbuilders.com.au
email: info@crbuilders.com.au

CHRIS REISSIG BUILDERS
PH 0407 971 852

Highland Constructions

Builder Fully Accredited All trades provided

- All building work
- Renovations
- Kitchens & Bathrooms
- New Homes
- House Inspections

Contact Jim 0448 438 594 NO JOB TOO SMALL

Skipper Homes

0408 690 336
www.skipperhomes.com.au

Building Custom Family Homes

CLASSIFIEDS

Advertising enquiries to: advertising@meandervalleygazette.com
Ph: 6286 8216

SERVICES TO OFFER

ACCOUNTING & BOOKKEEPING

DELORAINE Bean Counter. Looking after all your Business Accounts, MYOB, Payroll & Training needs. Call Zsuzsanna on 0427 362 058. delorainebeancounter@gmail.com. Room 4, 62-64 Emu Bay Rd, Deloraine TAS 7304.

COMPUTER REPAIRS

FOR Computer Repairs, Up-grades, Accessories & Internet Phone Installation. Call Alistair Carr. Mobile: 0438 681 290. Email: ali_carr47@carrpar.biz

JACQUELINE STACEY: specialising in muscle release work using Bowen, Emmett and Trigger Point therapies Ph: 6362 4335.

SHEARER

SHEEP, goats, alpacas. No job too small Phone 0429 705 146.

WANTED

WANTED TO BUY BUSH Block 5+acres to build home on. Within 15 minutes of Deloraine. Chris 0459 033 933.

SPORT IN BRIEF

CRICKET

By David Claridge

THE SHAMROCKS will be batting for a sixth consecutive grand final appearance in 2016, having won three of five in recent years.

Club Coach, Dane Anderson, is pretty confident going into the next season, saying that they are getting good numbers turning out to training.

"We think anything short of making a grand final again would be a disappointing season for us."

The club has been busy fundraising in the off season at Westbury IGA, encouraging the locals to come and watch them play.

"It would be good to see a few faces from the local community down at the cricket ground once the season starts."

"There will be games in Westbury every Saturday and Sunday."

Several players may have the chance to represent Tasmania in the U17 National Championships.

The first grade season starts early October.

Calling a service or retail business?
Let them know you saw their ad in Meander Valley Gazette.
And 'Thank You' for supporting local businesses!

SPORT

LEAPING LITTLES

Photo by: Mike Moores



Riley Sheriff, 10, of Deloraine, leaps for the sky.

THE RIO Olympics may be over, but the fun doesn't end there! With Little Athletics season just around the corner, now is a great time to sign up and get your kids active in the local community, with events for children aged 5 to 15.

Deloraine Little Athletics is a small Centre with a great

team of kids, who have a lot to be proud of!

Last year the Deloraine Centre was very successful, with several Centre records broken, and athletes performing very well at the State level.

There are a great range of activities to get involved in, including the 60 to 800m

races, walk, hurdles, long jump, high jump, shotput, discus and javelin.

Events are usually run on Saturday mornings from October to March. This season includes a new streamlined schedule, with events finished by lunchtime.

If you would like to register

your child, registration day is Monday 26th September at Deloraine Primary School hall from 3.00pm to 4.30pm.

Registration fees are \$90.00 with cash, cheque and EFT-POS facilities available. Children can attend and participate before paying to determine if they would enjoy

registering for the season. For all queries, Call Corran on 0456 126 269.

Deloraine Little Athletics is a small Centre with a great team of kids, who have a lot to be proud of!

FLAT PACK KITCHENS

VISIT OUR SHOWROOM WELL WORTH THE DRIVE

• COME & SEE OUR 500 M2 SHOWROOM

- KITCHENS - 8 on display
- FLAT PACK CARCASES - 33 assembled on display
- DOORS - Over 200 options
- BENCH TOPS - Over 800 colours
- CUPBOARD HANDLES - Over 5000 in stock
- CUTLERY TRAYS - 35 designs in stock
- WASTE BINS - 12 in stock
- ACCESSORIES, APPLIANCES & SPLASHBACKS

• WHY SUP-PLY?

- GREATER CHOICES, BETTER DISPLAYS
- CUSTOM MADE CARCASES, DOORS & BENCH TOPS AVAILABLE
- DEDICATED KITCHEN TEAM - YEARS OF EXPERIENCE
- QUALITY AUSTRALIAN MADE CARCASES
- GERMAN HARDWARE
- COMPETITIVE PRICES

CUSTOMISED FLAT PACKS



LOCALLY OWNED & OPERATED SINCE 1975

SUP-PLY
Building, Renovating & Joinery Supplies

Ph. 6424 7266
Email: kitchens@sup-ply.com

55 - 59 Don Road, Devonport
Mon - Fri 8 - 5
Sat 9 - 12